

Schedule 1

Item 1 Description of Agreement Area

A. External boundary description

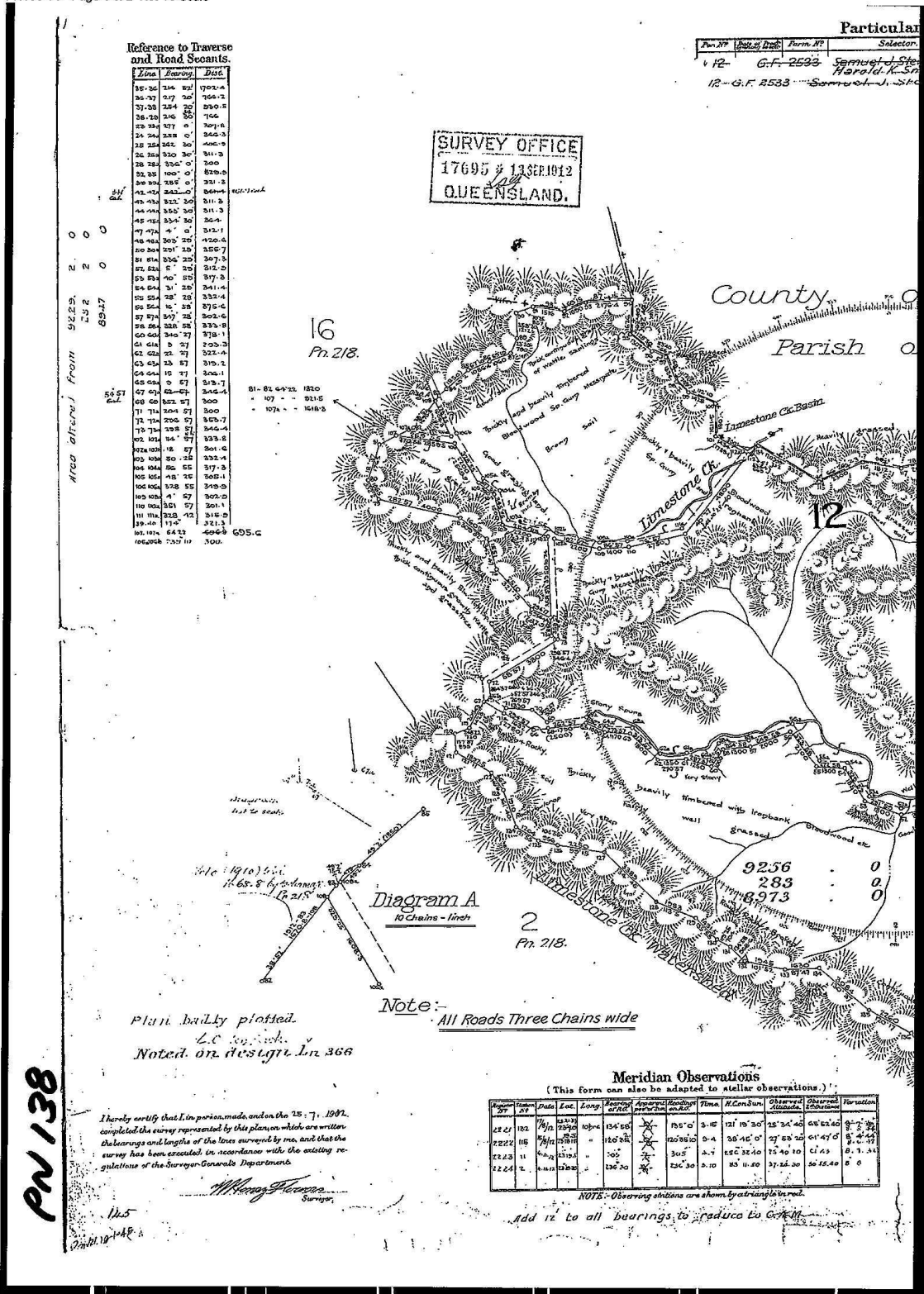
The area subject to this agreement covers all land and waters subject to:

- Lot 12 on PN138 (Oombah); and
- That part of Lot 24 on LI312 south of the centerline of Ten Mile Creek (Ten Mile)

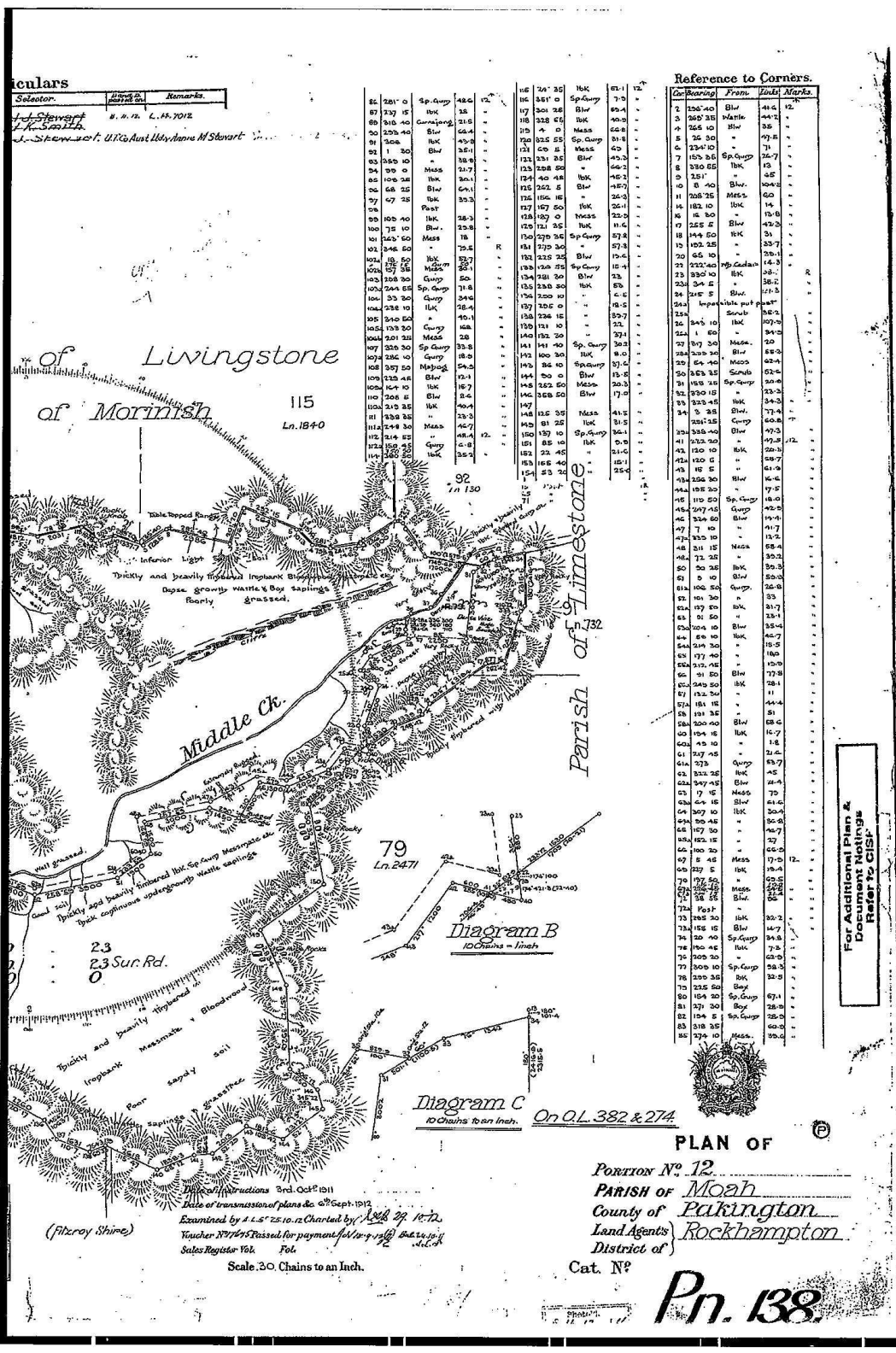
that falls wholly within Native Title Determination Application QUD6131/1998 Darumbal People (QC2012/008) as accepted for registration on 23 November 2012.

B. Map

PN138 V0 Page 1 of 2 Not To Scale



Copyright protects the plan/s being ordered by you. Unauthorised reproduction or amendments are not permitted.



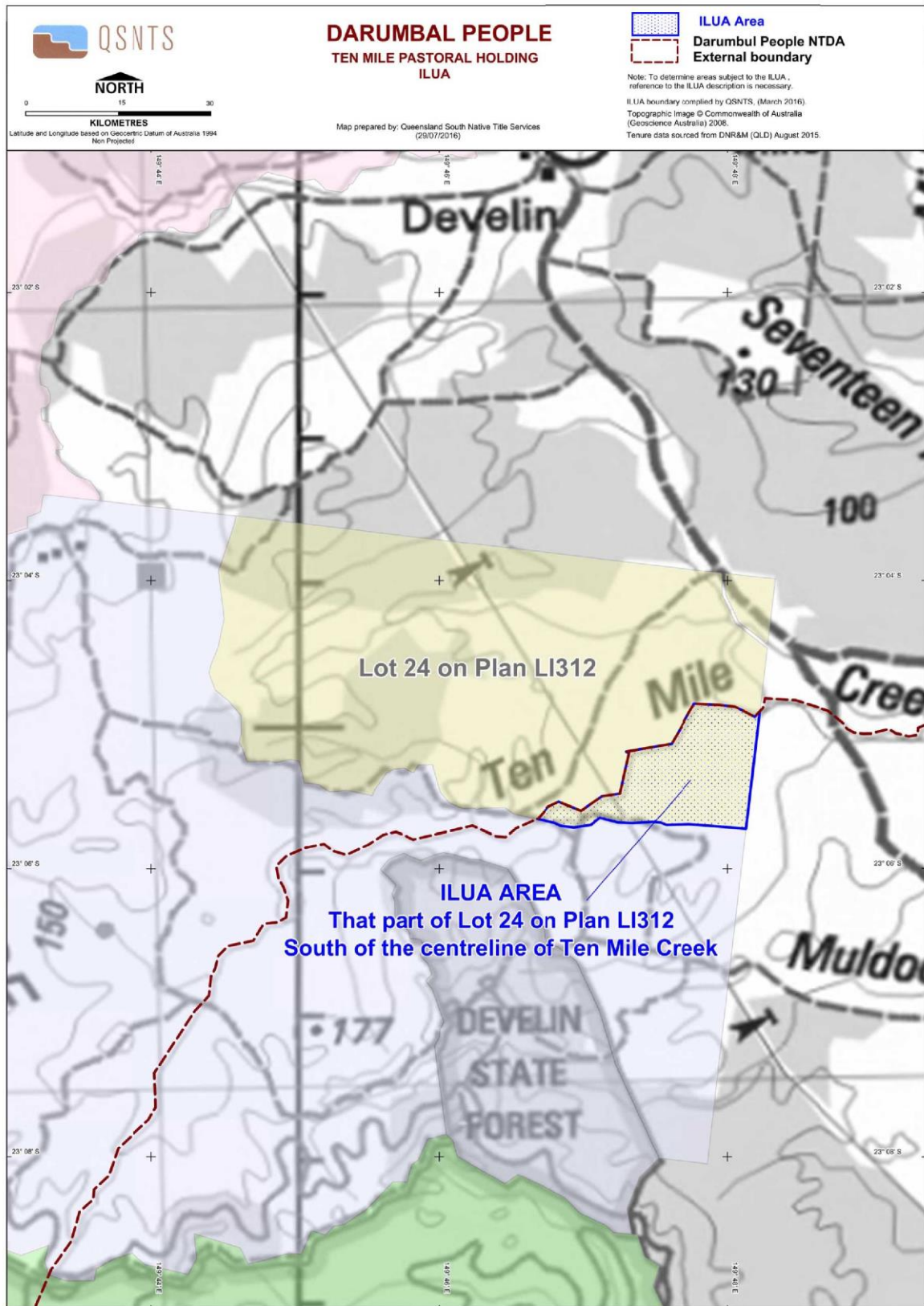
Selector.	Class of land.	Remarks.
J. Stewart
L.R. Smith
J. Stewart & L.R. Smith

86	281' 0	Sp. Gump	48.6	12
87	233' 15	lk	21.5	12
88	228' 40	Comp. Gump	38.5	12
89	228' 40	lk	64.4	12
90	228' 40	lk	43.8	12
91	228' 40	lk	38.8	12
92	228' 40	lk	38.8	12
93	228' 40	lk	38.8	12
94	228' 40	lk	38.8	12
95	228' 40	lk	38.8	12
96	228' 40	lk	38.8	12
97	228' 40	lk	38.8	12
98	228' 40	lk	38.8	12
99	228' 40	lk	38.8	12
100	228' 40	lk	38.8	12
101	228' 40	lk	38.8	12
102	228' 40	lk	38.8	12
103	228' 40	lk	38.8	12
104	228' 40	lk	38.8	12
105	228' 40	lk	38.8	12
106	228' 40	lk	38.8	12
107	228' 40	lk	38.8	12
108	228' 40	lk	38.8	12
109	228' 40	lk	38.8	12
110	228' 40	lk	38.8	12
111	228' 40	lk	38.8	12
112	228' 40	lk	38.8	12
113	228' 40	lk	38.8	12
114	228' 40	lk	38.8	12
115	228' 40	lk	38.8	12

Cornering.	From.	Point.	Remarks.
1	228' 40	lk	44.2
2	228' 40	lk	44.2
3	228' 40	lk	44.2
4	228' 40	lk	44.2
5	228' 40	lk	44.2
6	228' 40	lk	44.2
7	228' 40	lk	44.2
8	228' 40	lk	44.2
9	228' 40	lk	44.2
10	228' 40	lk	44.2
11	228' 40	lk	44.2
12	228' 40	lk	44.2
13	228' 40	lk	44.2
14	228' 40	lk	44.2
15	228' 40	lk	44.2
16	228' 40	lk	44.2
17	228' 40	lk	44.2
18	228' 40	lk	44.2
19	228' 40	lk	44.2
20	228' 40	lk	44.2
21	228' 40	lk	44.2
22	228' 40	lk	44.2
23	228' 40	lk	44.2
24	228' 40	lk	44.2
25	228' 40	lk	44.2
26	228' 40	lk	44.2
27	228' 40	lk	44.2
28	228' 40	lk	44.2
29	228' 40	lk	44.2
30	228' 40	lk	44.2
31	228' 40	lk	44.2
32	228' 40	lk	44.2
33	228' 40	lk	44.2
34	228' 40	lk	44.2
35	228' 40	lk	44.2
36	228' 40	lk	44.2
37	228' 40	lk	44.2
38	228' 40	lk	44.2
39	228' 40	lk	44.2
40	228' 40	lk	44.2
41	228' 40	lk	44.2
42	228' 40	lk	44.2
43	228' 40	lk	44.2
44	228' 40	lk	44.2
45	228' 40	lk	44.2
46	228' 40	lk	44.2
47	228' 40	lk	44.2
48	228' 40	lk	44.2
49	228' 40	lk	44.2
50	228' 40	lk	44.2
51	228' 40	lk	44.2
52	228' 40	lk	44.2
53	228' 40	lk	44.2
54	228' 40	lk	44.2
55	228' 40	lk	44.2
56	228' 40	lk	44.2
57	228' 40	lk	44.2
58	228' 40	lk	44.2
59	228' 40	lk	44.2
60	228' 40	lk	44.2
61	228' 40	lk	44.2
62	228' 40	lk	44.2
63	228' 40	lk	44.2
64	228' 40	lk	44.2
65	228' 40	lk	44.2
66	228' 40	lk	44.2
67	228' 40	lk	44.2
68	228' 40	lk	44.2
69	228' 40	lk	44.2
70	228' 40	lk	44.2
71	228' 40	lk	44.2
72	228' 40	lk	44.2
73	228' 40	lk	44.2
74	228' 40	lk	44.2
75	228' 40	lk	44.2
76	228' 40	lk	44.2
77	228' 40	lk	44.2
78	228' 40	lk	44.2
79	228' 40	lk	44.2
80	228' 40	lk	44.2
81	228' 40	lk	44.2
82	228' 40	lk	44.2
83	228' 40	lk	44.2
84	228' 40	lk	44.2
85	228' 40	lk	44.2

For Additional Plans & Document Notings Refer to C187

PLAN OF
 PORTION No. 12
 PARISH of Moah
 County of Pakington
 Land Agents Rockhampton
 District of
 Cat. No.
Pn. 138.



Item 2 **Description of Lease**

Term Lease 233011 comprising Lot 12 on PN138

Pastoral Holding 35/3734 comprising Lot 24 on LI 312

Item 3 **Description of Lessee**

Stewart John Jones and Wayne Robert Jones